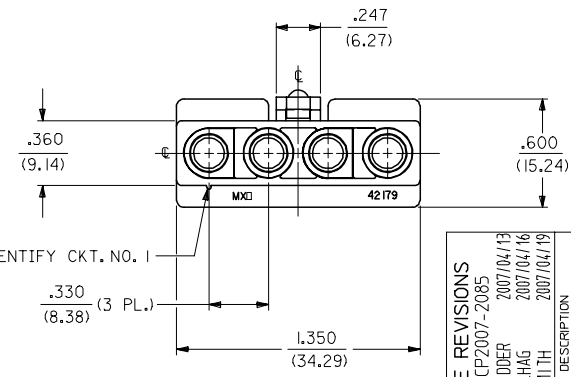
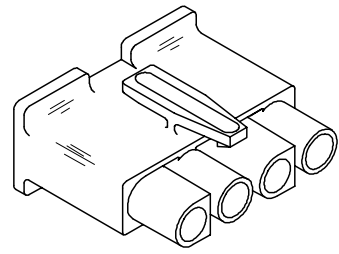
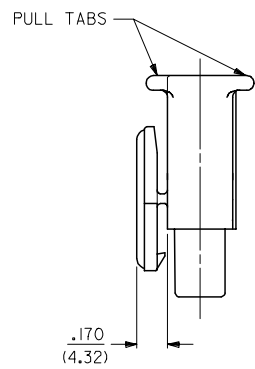
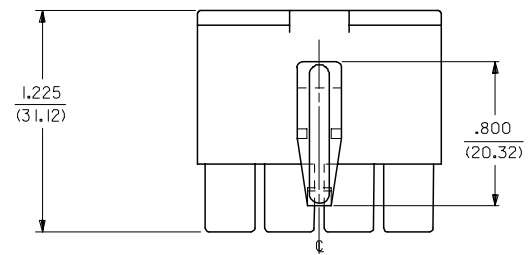
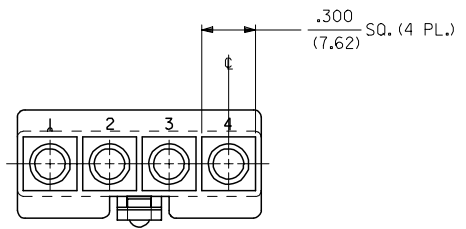


13 12 11 10 9 8 7 6 5 4 3 2 1

J
I
H
G
F
E
D
C
B
A

J
I
H
G
F
E
D
C
B
A



RIB TO IDENTIFY CKT. NO. 1

.330 (8.38) (3 PL.)

RECEPTACLE

3	I
2	I
1	I
SHT.	REV.

UPDATE REVISIONS	
FC NO. UCP2007-2085	2007/04/13
DRWN:PRD/DER	2007/04/16
CHKD:AL/HAG	2007/04/16
APPR:FSM/TH	2007/04/19
REV	DESCRIPTION

QUALITY SYMBOLS
▽=0
▽=0

GENERAL TOLERANCES (UNLESS SPECIFIED)	
mm	INCH
4 PLACES ± .005	± .0007
3 PLACES ± .007	± .0010
2 PLACES ± 0.18	± .010
1 PLACE ± 0.25	± .010
ANGULAR ± 1 °	
DRAFT WHERE APPLICABLE MUST REMAIN WITHIN DIMENSIONS	

DIMENSION STYLE	
IN/MM	
DRAWN BY	DATE
GEP	1988/09/21
CHECKED BY	DATE
RW	1988/09/21
APPROVED BY	DATE
RAS	1988/09/21
MATERIAL NO.	
SEE CHART	

SCALE	DESIGN UNITS	THIRD ANGLE PROJECTION
2:1	INCH	☑
TITLE		
.125/(3.17) HOUSING, PLUG AND RECEPTACLE		
4 CKT .330/(8.38) CTRS.		
MATERIAL NO.		SHEET NO.
SD-42179-4*		1 OF 3
THIS DRAWING CONTAINS INFORMATION THAT IS PROPRIETARY TO MOLEX INCORPORATED AND SHOULD NOT BE USED WITHOUT WRITTEN PERMISSION		

12 11 10 9 8 7 6 5 4 3 2 1

PLUG		
PART NO.	ENG. NO.	
03-12-2046	42179-4P1	
03-12-2045	42179-4P	
03-12-7042	42179-4PYW	
03-12-7043	42179-4PIYW	
03-12-7040	42179-4PBK	
03-12-7041	42179-4P1BK	
03-12-7044	42179-4PIRD	OBSOLETE
03-12-7045	42179-4P2	

RECEPTACLE	
PART NO.	ENG. NO.
03-12-1046	42179-4R1
03-12-6040	42179-4R1BK
03-12-6041	42179-4R1YW

LEGEND:

42179-4***

CIRCUIT SIZE: _____

HOUSING TYPE: _____

P = PLUG

R = RECEPTACLE

FEATURE OPTIONS: _____

BLANK = WITH MOUNTING EARS (PLUG ONLY)

1 = WITHOUT MOUNTING EARS

2 = WITH MOUNTING EARS (PLUG ONLY); WITHOUT LOCKING RAMP

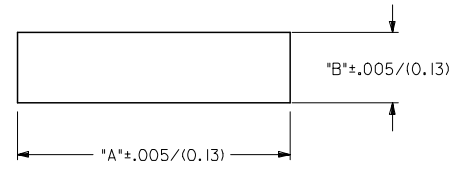
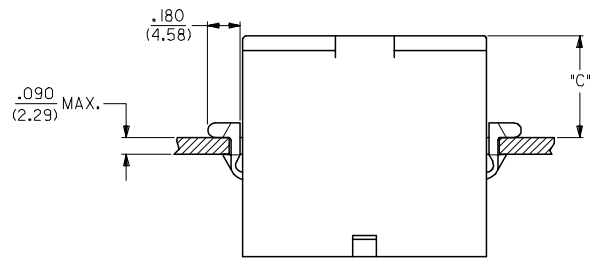
COLOR: _____

BLANK = 94V-2; TRANSLUCENT NATURAL COLOR

AM=AMBER BK=BLACK BU=BLUE

BN=BROWN GY=GRAY GN=GREEN

OR=ORANGE RD=RED YW=YELLOW



HOUSING	DIM. "A"	DIM. "B"	DIM. "C"
PLUG	1.511/(38.38)	.440/(11.18)	.57/(14.5)

NOTES:

1. MATERIAL: NYLON (PA), UL94V-2, COLOR-NATURAL (TRANSLUCENT)
2. FINISH: NONE
3. PRODUCT SPECIFICATION: NONE
4. PACKAGING SPECIFICATION: PK-42179-001
5. PART ACCEPTS A MAXIMUM .250/(6.35) INSULATION DIAMETER WIRE.
6. FOR USE WITH ALL MOLEX .125/(3.17) DIAMETER SERIES TERMINALS EXCEPT THE 1219/1220 SERIES.
7. PARTS CONFORM TO CLASS B REQUIREMENT OF COSMETIC SPECIFICATION PS-45499-002

OBS. P/N 03-12-7044 EC NO. UCP2007-2085 DRAWN/PRD DR 2007/04/13 CHKD: AEL/HAG 2007/04/16 APPR: FSM/TH 2007/04/19	QUALITY SYMBOLS
	▽=0
	▽=0
	REVISION

GENERAL TOLERANCES (UNLESS SPECIFIED)	
mm	INCH
4 PLACES ± .005	± .0007
3 PLACES ± .007	± .0010
2 PLACES ± 0.18	± .010
1 PLACE ± 0.25	± .010
ANGULAR ± 1 °	

DIMENSION STYLE	
IN	MM
DRAWN BY	DATE
GEP	1988/09/21
CHECKED BY	DATE
RW	1988/09/21
APPROVED BY	DATE
RAS	1988/09/21
MATERIAL NO.	
SIZE	
C	

SCALE	DESIGN UNITS	THIRD ANGLE PROJECTION
2:1	INCH	☉
TITLE		
.125/(3.17) HOUSING, PLUG AND RECEPTACLE, 4 CKT .330/(8.38) CTRS.		
MATERIAL NO. SD-42179-4*		
DOCUMENT NO. SHEET NO. 3 OF 3		
DRAFT WHERE APPLICABLE MUST REMAIN WITHIN DIMENSIONS		
SEE CHART		
THIS DRAWING CONTAINS INFORMATION THAT IS PROPRIETARY TO MOLEX INCORPORATED AND SHOULD NOT BE USED WITHOUT WRITTEN PERMISSION		